



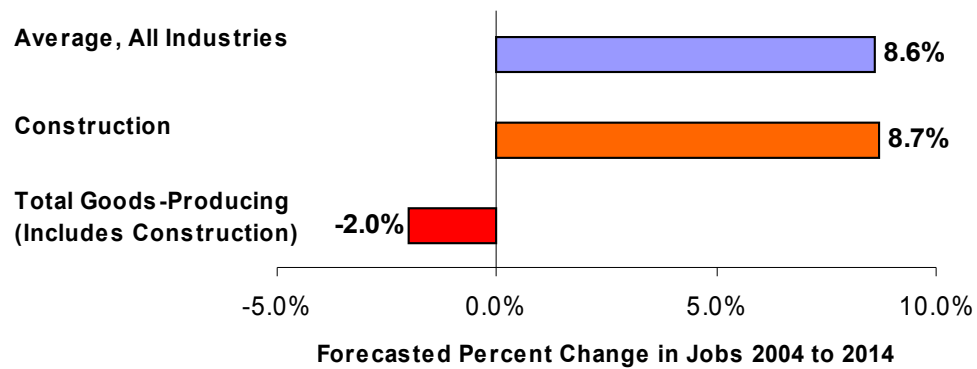
Building the Capital Area's Construction Workforce

EMPLOYMENT DEMAND

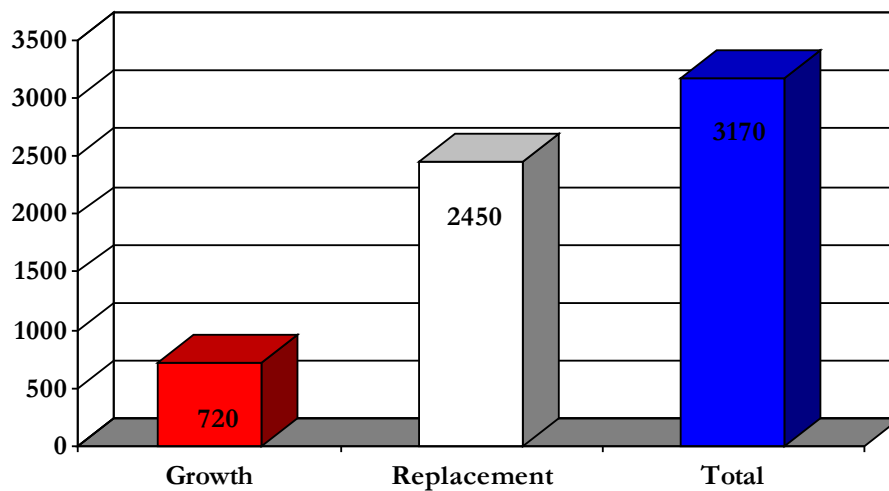
The following data was obtained from the State of Michigan and is specific to Ingham, Eaton and Clinton Counties as of June 2007.

Additional employment data can be obtained at www.michigan.gov/lmi.

Construction Expected to Grow at Overall Industry Average



Why the industry needs 3170 more workers by 2014



Growth: The number of workers needed to meet projected increased demand.

Replacement: The number of workers needed to replace workers that have left the industry by choice or retirement.